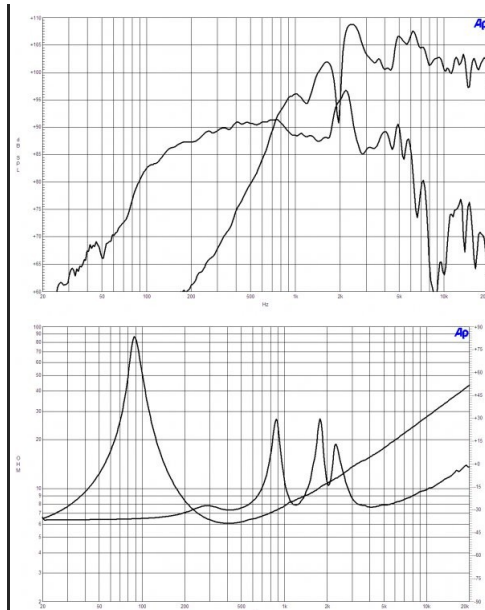




6HCX51

Coaxials - 6.5 Inches

300 W continuous program power capacity
70°x70° nominal coverage
90 - 18000 Hz response
92 dB sensitivity
Single Neodymium magnet assembly



Specifications

| | |
|-------------------------------|-----------------|
| Nominal diameter | 170 mm (6.5 in) |
| Nominal impedance | 8 Ω |
| Minimum impedance lf | 6.0 Ω |
| Minimum impedance hf | 7.5 Ω |
| Frequency range | 90 - 18000 Hz |
| Dispersion angle ¹ | 70x70 ° |
| Magnet material | Neodymium Ring |

Specifications LF Unit

| | |
|---|----------------|
| LF Sensitivity ² | 92.0 dB |
| LF Nominal Power Handling ³ | 150 W |
| LF Continuous Power Handling ⁴ | 300 W |
| LF Voice Coil Diameter | 51 mm (2.0 in) |
| LF Winding Material | Copper |

Specifications HF Unit

| | |
|---|----------|
| HF Sensitivity ⁵ | 105.0 dB |
| HF Nominal Power Handling ⁶ | 25 W |
| HF Continuous Power Handling ⁷ | 50 W |

Specifications HF Unit

| | |
|------------------------------------|----------------|
| HF Voice Coil Diameter | 36 mm (1.4 in) |
| HF Winding Material | Aluminium |
| Diaphragm material | Polyester |
| Recommended crossover ⁸ | 2.2 kHz |

Parameters

| | |
|----------|---|
| Fs | 89 Hz |
| Re | 5.2 Ω |
| Qes | 0.4 |
| Qms | 7.5 |
| Qts | 0.38 |
| Vas | 5.0 dm ³ (0.18 ft ³) |
| Sd | 132.0 cm ² (20.5 in ²) |
| η_0 | 0.8 % |
| Xmax | 5.0 mm |
| Xvar | 5.5 mm |
| Mms | 16 g |
| Bl | 10.9 Txm |
| Le | 0.8 mH |

Parameters

| | |
|-----|--------|
| EBP | 222 Hz |
|-----|--------|

Mounting And Shipping Info

| | |
|-----------------------------|-----------------------------------|
| Overall diameter | 187 mm (7.4 in) |
| Bolt circle diameter | 172 mm (6.7 in) |
| Baffle cutout diameter | 146 mm (5.75 in) |
| Depth | 104 mm (4.1 in) |
| Flange and gasket thickness | 11 mm (0.4 in) |
| Net weight | 1.55 kg (3.4 lb) |
| Shipping units | 1 |
| Shipping weight | 1.85 kg (4.1 lb) |
| Shipping box | 266x259x155 mm (10.5x10.2x6.1 in) |

Service Kit

| | |
|-----------------------|-------------|
| Service kit lf | RCK06HCX518 |
| Replacement diaphragm | MMD0128 |

1. Included by -6 dB down points.

2. Applied RMS Voltage is set to 2.83V.

3. 2 hours test made with continuous pink noise signal (6 dB crest factor) within the range Fs-10Fs. Power calculated on rated minimum impedance. Loudspeaker in free air.

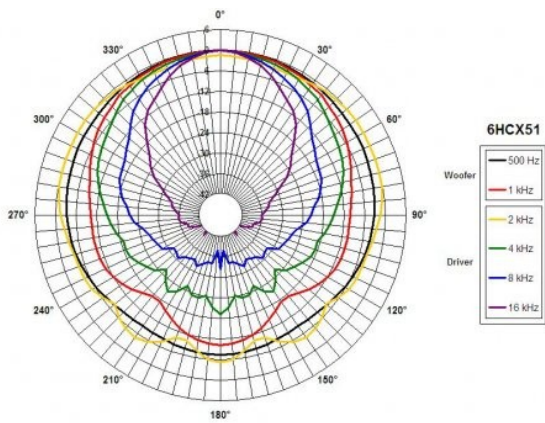
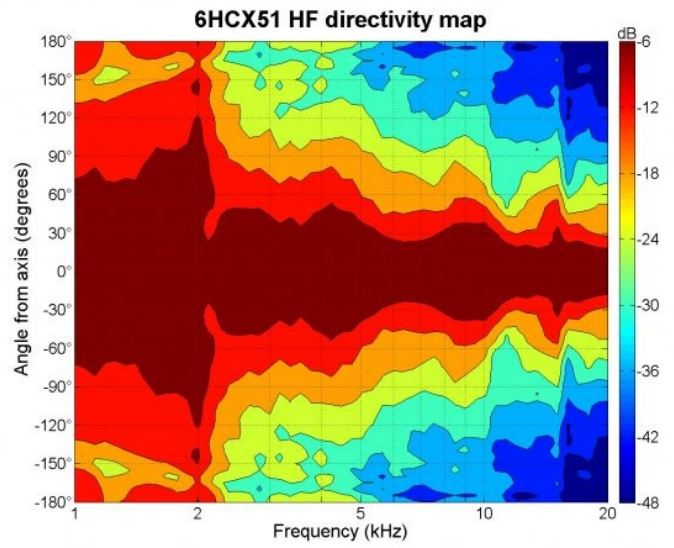
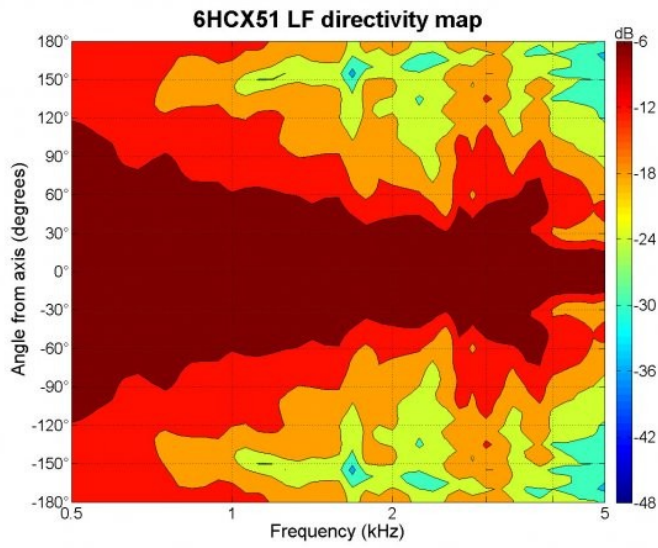
4. Power on Continuous Program is defined as 3 dB greater than the Nominal rating.

5. Applied RMS Voltage is set to 2.83V.

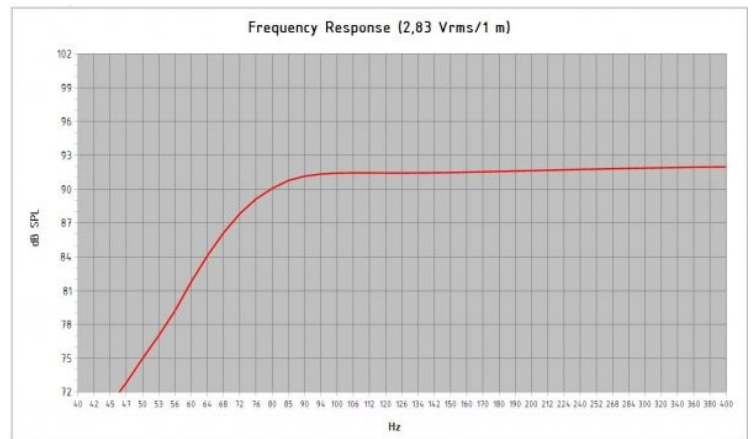
6. 2 hour test made with continuous pink noise signal (6 dB crest factor) within the range from the recommended crossover frequency to 20 kHz. Power calculated on rated minimum impedance. Loudspeaker in free air.

7. Power on Continuous Program is defined as 3 dB greater than the Nominal rating.

8. 12 dB/oct. or higher slope high-pass filter.



B&C SPEAKERS



Model: **6HCX51**
Enclosure Type: **Base Reflex**

| | | | |
|-------------------------------|-------------|-------------------------------|-------------|
| Internal Net Volume (Liters): | 7 | Port Area (cm ²): | 30.4 |
| Tuning Frequency (Hz): | 80 | Port Length (cm): | 15.0 |
| Frequency (-3 dB) (Hz): | 76.0 | | |

Excursion Limited Maximum SPL at 1 meter (dB): **109.7** equal to **75.6** Watts (Bass Band Power Rating)
 Thermal Limited Maximum SPL at 1 meter (dB): **112.7** equal to **150.0** Watts (Mid Band Power Rating)