

## NOMINAL SPECIFICATIONS

Throat Diameter	25.4 mm (1 in)
Frequency Range	1÷20 kHz
Recommended Crossover Frequency (1)	1.4 kHz
Horizontal Nominal Coverage (-6dB) (2)	80°
Vertical Nominal Coverage (-6dB) (2)	70°
Directivity Index (2) (4)	8 dB
Material	Al
Mouth Height	120 mm (4.72 in)
Mouth Width	180 mm (7.09 in)
Depth	85.9 mm (3.38 in)
Mouth Mounting Holes (4x)	6.5 mm (0.26 in)
Net Weight	0.460 Kg (1.01 lb)
Shipping Weight	0.567 Kg (1.25 in)
Shipping Box	208x135x107 mm (8.19x5.31x4.21 in)

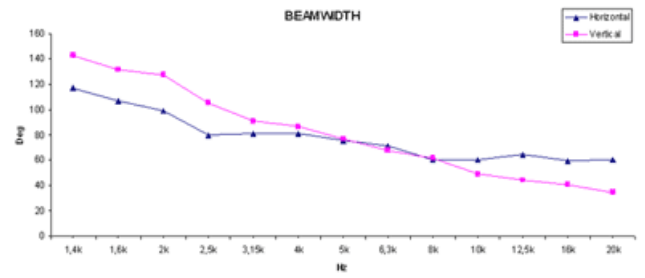
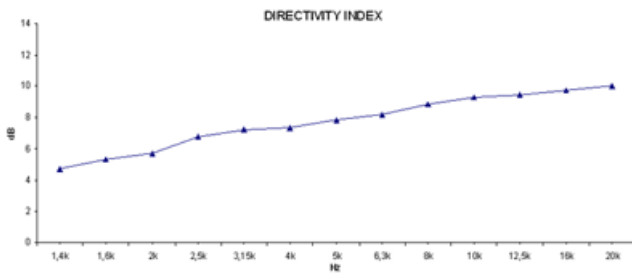
## NOTES

(1) 4  $\pi$  sr acoustic loading

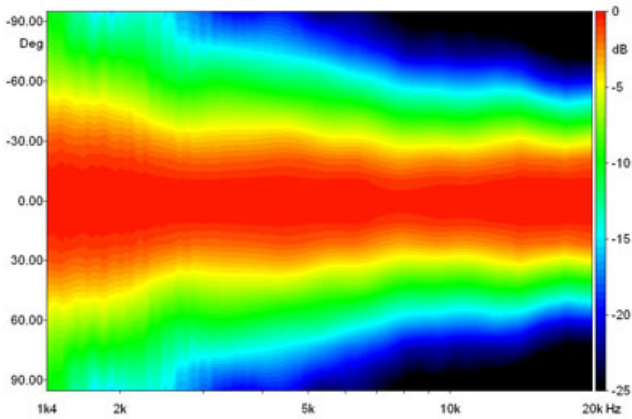
(2) Average value in frequency range: 2÷16 KHz

(4) Average values on horizontal and vertical planes

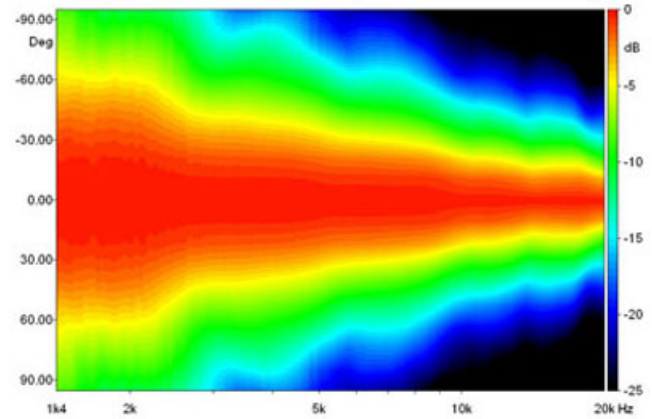
# CURVES



# BEAMWIDTH

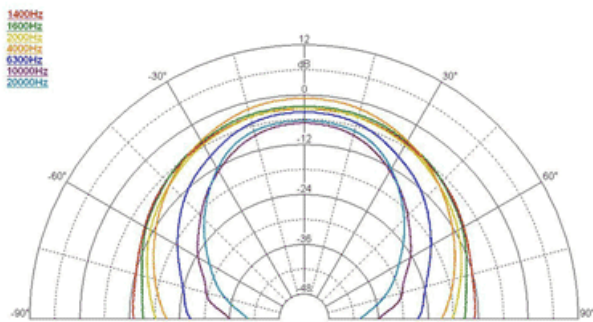


Horizontal Beamwidth

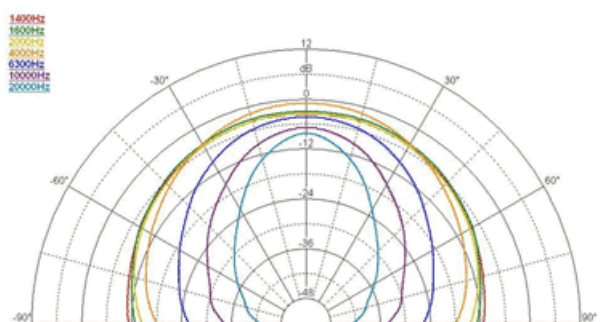


Vertical Beamwidth

# POLAR PATTERN



Horizontal Polar Pattern



Vertical Polar Pattern

