

NOMINAL SPECIFICATIONS

| | |
|--|---------------------------------------|
| Throat Diameter | 25.4 mm (1 in) |
| Frequency Range | 1÷20 kHz |
| Recommended Crossover Frequency (1) | 1.6 kHz |
| Horizontal Nominal Coverage (-6dB) (2) | 140° |
| Material | Al |
| Mouth Height | 122.3 mm (4.81 in) |
| Mouth Width | 86 mm (3.39 in) |
| Depth | 110 mm (4.33 in) |
| Mouth Mounting Holes (4x) | 6.5 mm (0.26 in) |
| Net Weight | 0.48 Kg (1.06 lb) |
| Shipping Weight | 0.50 Kg (1.10 in) |
| Shipping Box | 150x123x102 mm (5.91x4.84x4.02 in) |

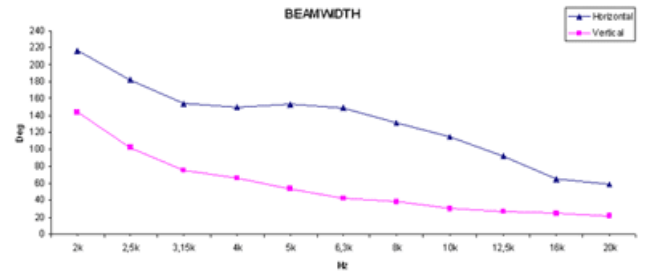
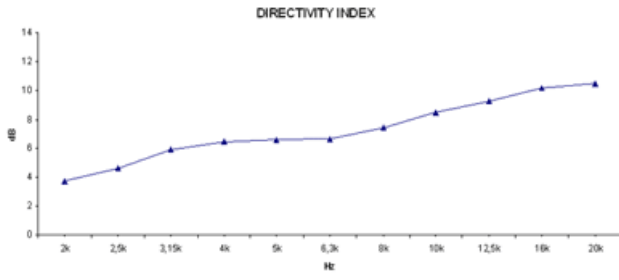
NOTES

() Sold only in combination with a FaitalPRO 1" HF Driver

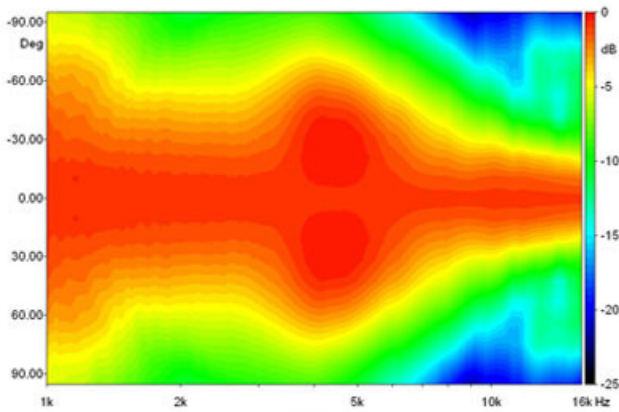
(1) 4 π sr acoustic loading

(2) Average value in frequency range: 2÷16 KHz

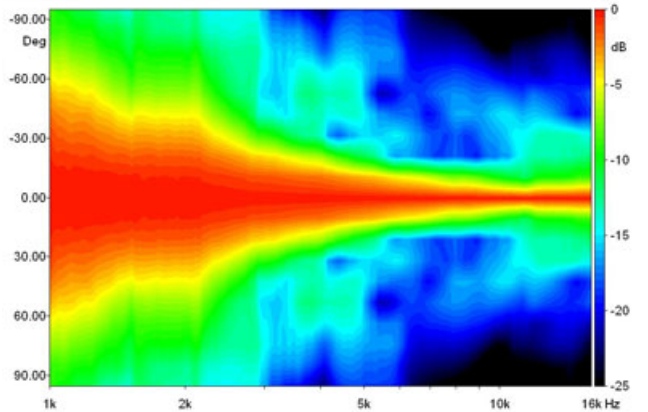
CURVES



BEAMWIDTH

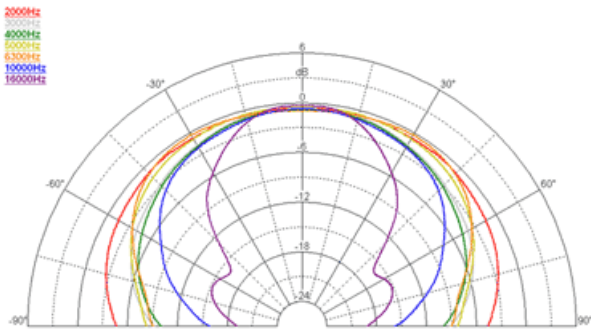


Horizontal Beamwidth

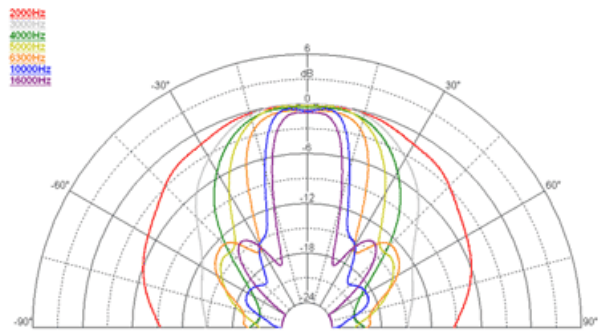


Vertical Beamwidth

POLAR PATTERN



Horizontal Polar Pattern



Vertical Polar Pattern

