

NOMINAL SPECIFICATIONS

| | |
|--|---------------------------------|
| Throat Diameter | 36.5 mm (1,4 in) |
| Frequency Range | 0.8÷20 kHz |
| Recommended Crossover Frequency (1) | 0.8 kHz |
| Horizontal Nominal Coverage (-6dB) (2) | 110° |
| Material | Al |
| Mouth Height | 163 mm (6.4 in) |
| Mouth Width | 130 mm (5.1 in) |
| Depth | 200 mm (7.9 in) |
| Mouth Mounting Holes (4x) | 7 mm (0.28 in) |
| Net Weight | 1.4 Kg (3.1 lb) |
| Shipping Weight | 1.65 Kg (3.6 in) |
| Shipping Box | 232x142x179 mm (9.1x5.6x7.0 in) |

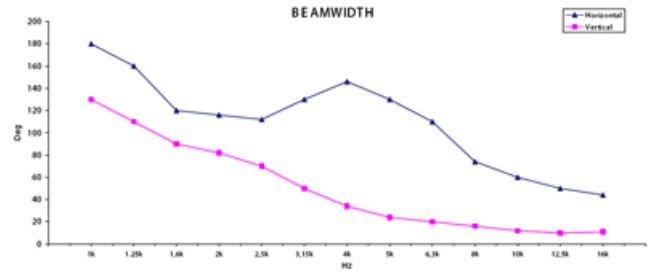
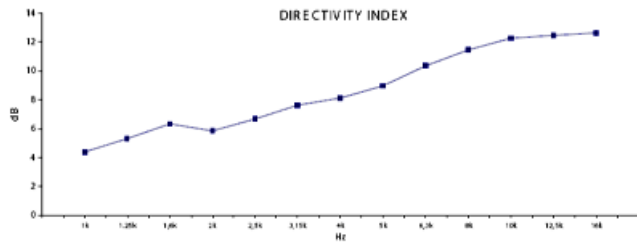
NOTES

() Sold only in combination with a FaitalPRO 1.4" HF Driver

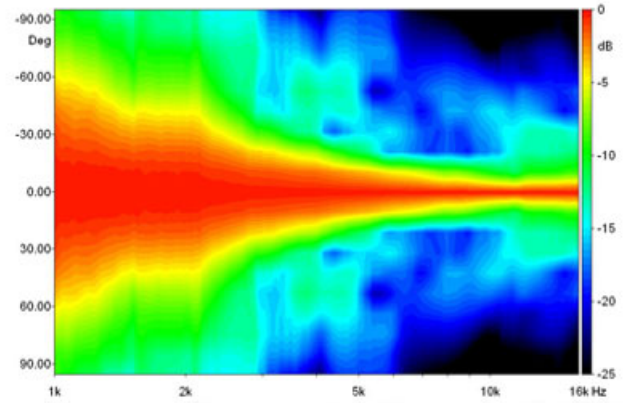
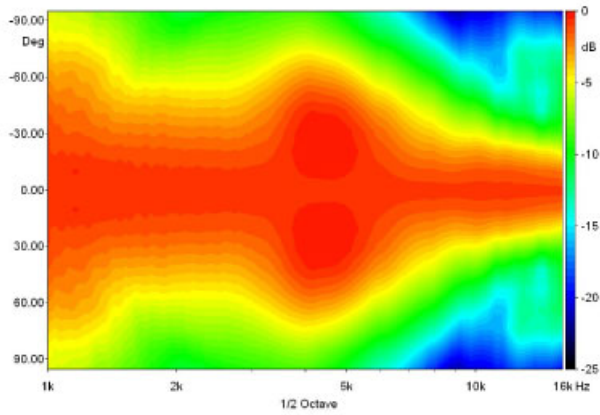
(1) 4 π sr acoustic loading

(2) Average value in frequency range: 1÷16 KHz

CURVES



BEAMWIDTH



POLAR PATTERN

